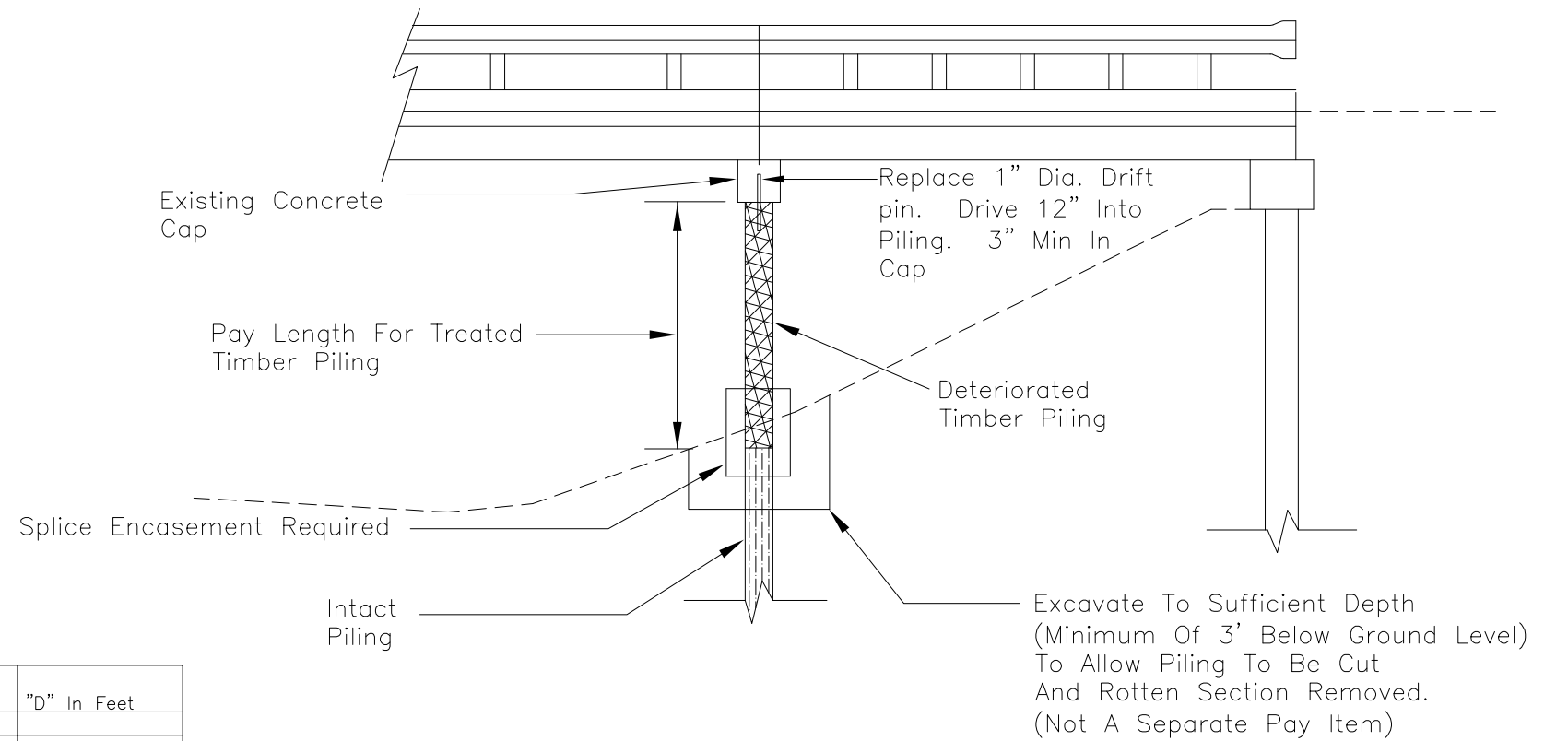
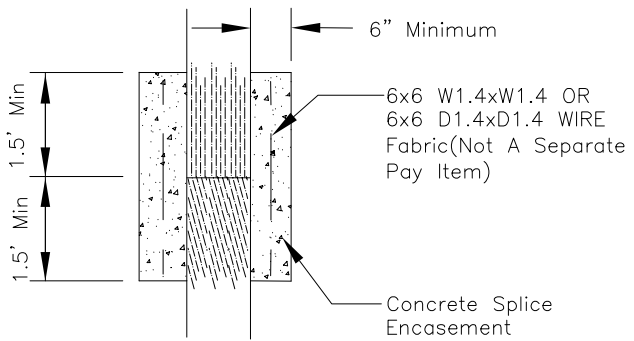


"H" In Feet	"D" In Feet
10'-0"	
11'-0"	
12'-0"	
13'-0"	
14'-0"	
15'-0"	
16'-0"	
17'-0"	8'-6"
18'-0"	8'-6"
19'-0"	8'-6"
20'-0"	8'-6"
21'-0"	11'-6"
22'-0"	11'-6"
23'-0"	11'-6"
24'-0"	11'-6"



		BY:	OFFICE OF STATE AID ROAD CONSTRUCTION MISSISSIPPI DEPARTMENT OF TRANSPORTATION	
		REVISION	TIMBER PILE REPAIR	
		DATE	BY: JBM	DATE: NOVEMBER 16, 2004
				SA-TPR-1